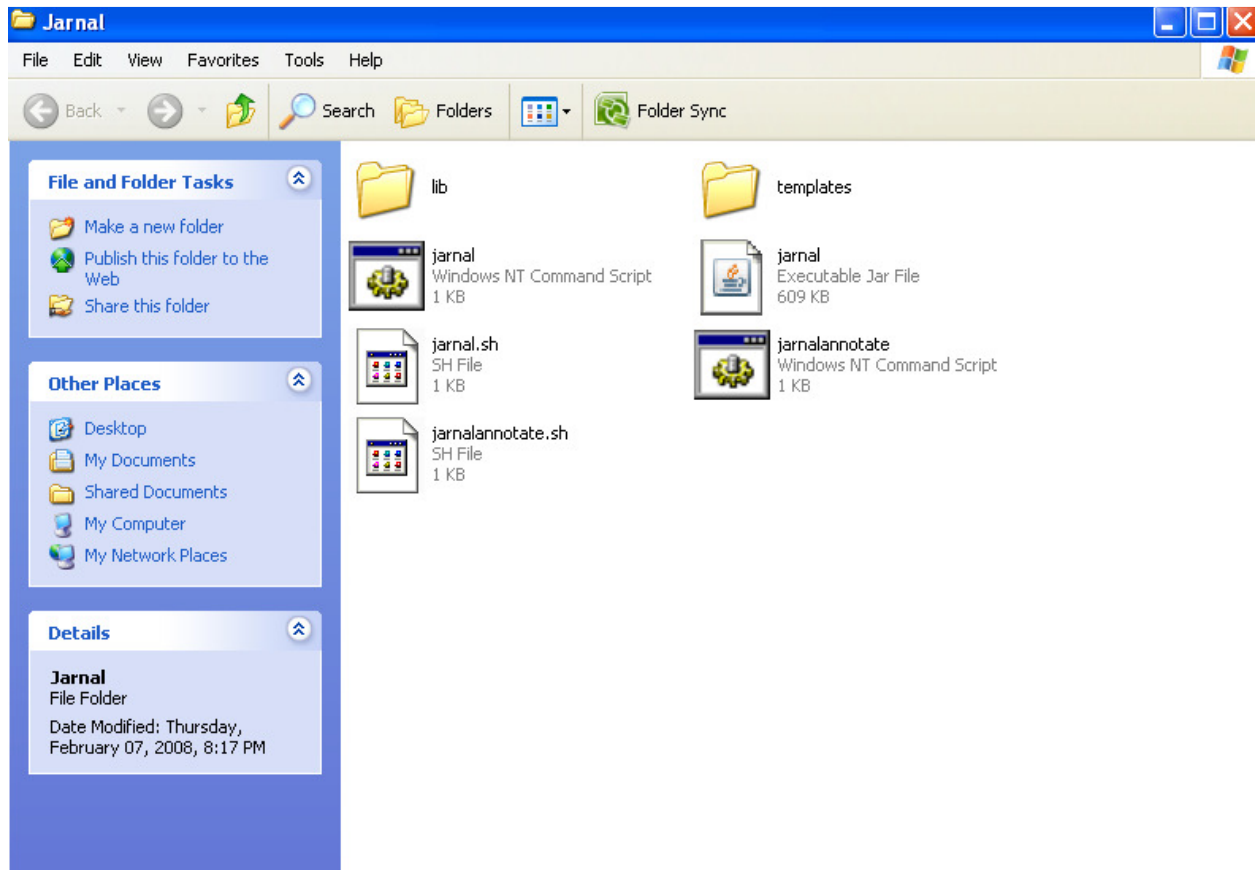


## Jarnal - free pdf annotator tool

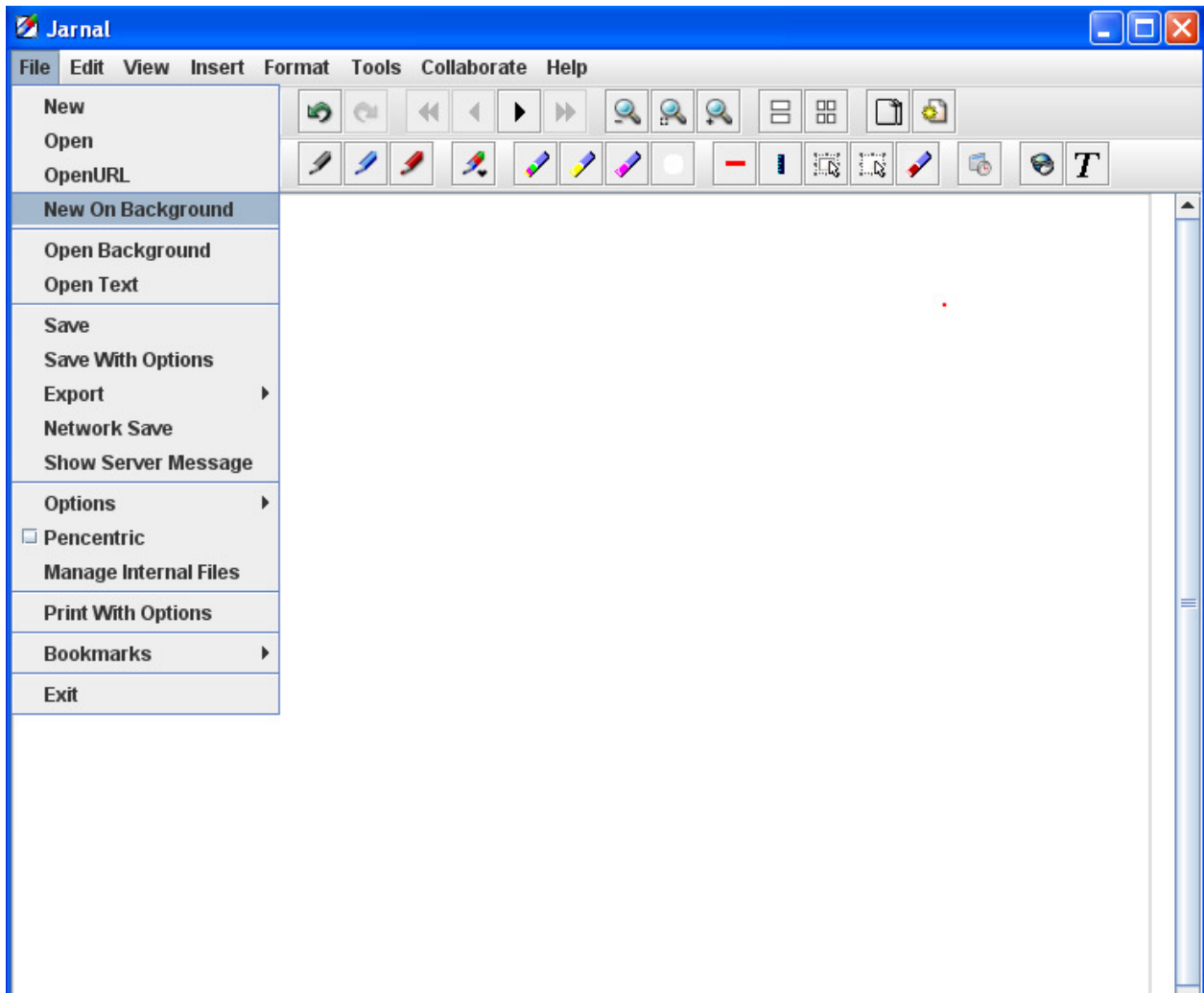
<http://www.dklevine.com/general/software/tc1000/jarnal-down.htm>

When you unzip the files, you will see this:

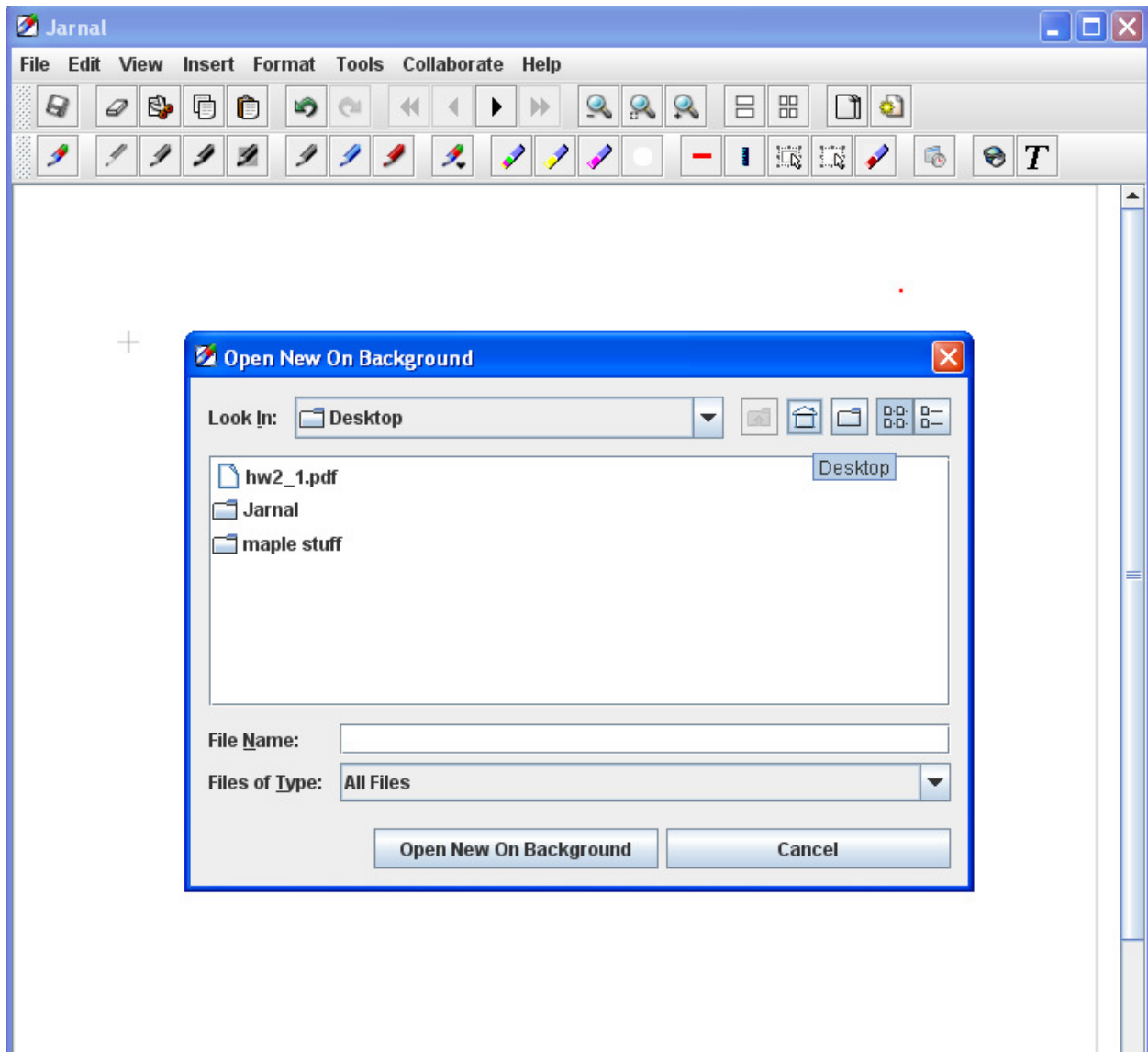


Save the homework pdf file to your computer.

Double click on jarnalannotate (you can make a shortcut to this on your desktop if you wish)



**Choose New On Background**



**Open your homework file (hint: it works best if you open your hw file in Adobe first to make sure the file is okay).**

Jarnal

File Edit View Insert Format Tools Collaborate Help

MATH 1431 ONLINE, SECTION 19356  
SPRING 2009  
HOMEWORK ASSIGNMENT 2.1

+

PRINT your name, myUH (PeopleSoft) ID number below

Name \_\_\_\_\_

PEOPLESOFT ID \_\_\_\_\_

---

INSTRUCTIONS

- Print out this file and complete the problems. You must do all the problems!
- The section number and problem number are in parentheses.
- Use a blue or black pen or a pencil.
- Write your solutions in the spaces provided.
- You must show work in order to receive credit for a problem.
- Write your final answer in the space provided.
- Homework will NOT be accepted through email or in person. Homework must be submitted through CourseWare BEFORE the deadline. The CourseWare interface for uploading homework allows single and multiple file uploads, and accepts files in the tiff, jpeg and pdf formats. There is a file size restriction of 10 MB per assignment. It is best if your completed homework is in Portable Document Format (.pdf) format when submitted (as a single file).
- Submit the completed assignment at <http://www.casa.uh.edu>

---

1. (Section 2.1, Problem 3)

**Write on your hw using a pen tablet or tablet pc.**

Jarnal

File Edit View Insert Format Tools Collaborate Help

MATH 1431 ONLINE, SECTION 19356  
SPRING 2009  
HOMEWORK ASSIGNMENT 2.1

+

PRINT your name, myUH (PeopleSoft) ID number below

Name Becki George

PEOPLESOFT ID 1234567

---

INSTRUCTIONS

- Print out this file and complete the problems. You must do all the problems!
- The section number and problem number are in parentheses.
- Use a blue or black pen or a pencil.
- Write your solutions in the spaces provided.
- You must show work in order receive credit for a problem.
- Write your final answer in the space provided.
- Homework will NOT be accepted through email or in person. Homework must be submitted through CourseWare BEFORE the deadline. The CourseWare interface for uploading homework allows single and multiple file uploads, and accepts files in the tiff, jpeg and pdf formats. There is a file size restriction of 10 MB per assignment. It is best if your completed homework is in Portable Document Format (.pdf) format when submitted (as a single file).
- Submit the completed assignment at <http://www.casa.uh.edu>

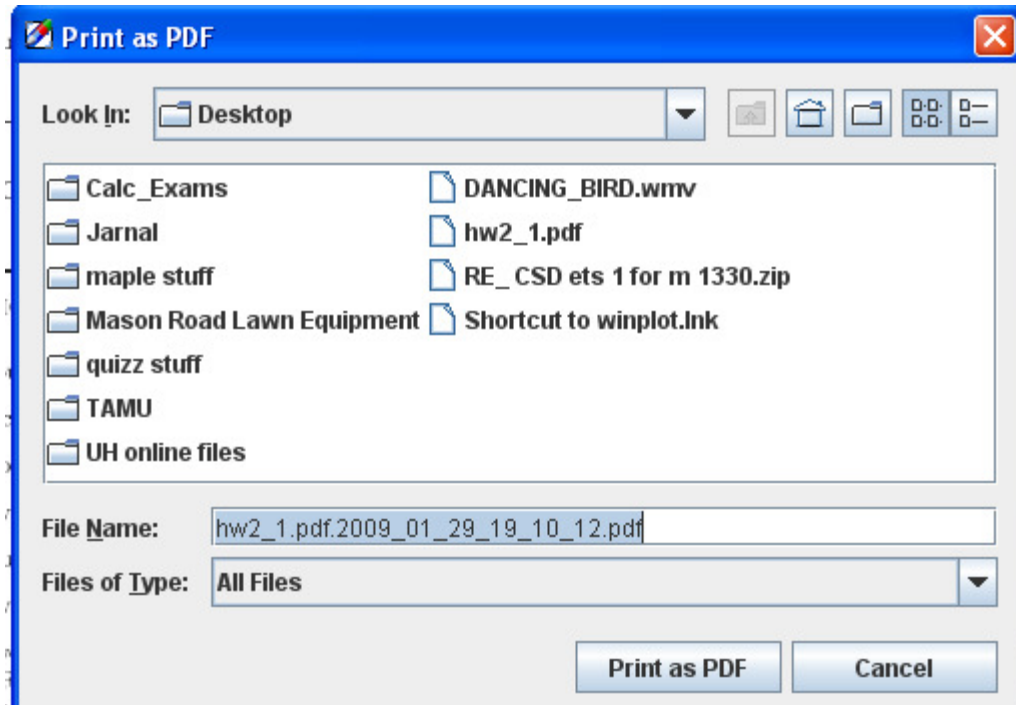
---

1. (Section 2.1, Problem 3)

$\lim_{x \rightarrow c^-} f(x) =$

Scroll down to see other pages.

When you are finished choose File - Export - Export to pdf



**If you change the file name, make sure there is .pdf after the name.**

**Do not save it as the same name as the original file.**

**Open your new pdf to make sure it is okay.**